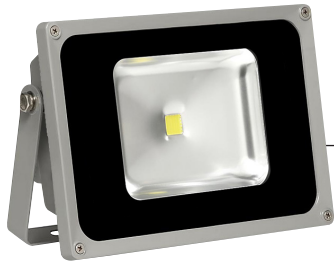
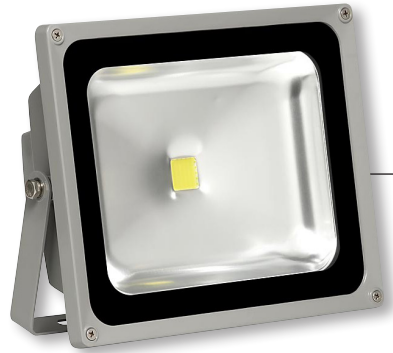


**230V OUTDOOR LED | FLOODLIGHTS**



**LS780**

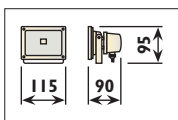


**LS781**

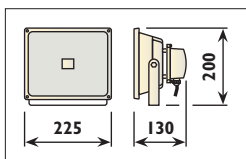


**LS782**

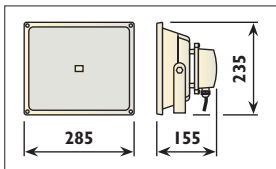
Lamp equivalents		
LED		Incandescent
10w	→	±100w
20w	→	±200w
30w	→	±300w
50w	→	±500w





**LS780**



**LS781**



**LS782**

Aluminium body with tempered glass lens					
Code	Class	IP	QC	Lamp/s	Colour/s
				 230v LED factory fitted	 Aluminium
<b>LS780</b>	I	65	22	10w	•
<b>LS781</b>	I	65	22	20w   30w	•
<b>LS782</b>	I	65	22	50w	•

Note: The above products carry a 2 year guarantee

Should you have any comments or queries, please contact our sales team on:  
 Johannesburg Tel: (011) 386 0000 or Fax: (011) 444 1565  
 Cape Town Tel: (021) 521 2500 or Fax: (021) 557 5846  
 Durban Tel: (031) 563 9636 or Fax: (031) 563 5232  
 www.radiant.co.za info@radiant.co.za  
 Got a suggestion, compliment or complaint – [Click here](#) to talk to us.  
**Note: Products must be installed by a qualified Electrician.**

